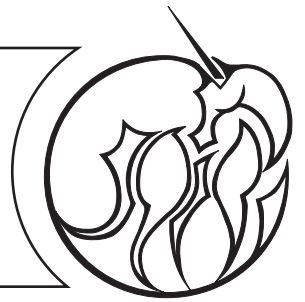


{ the avant-garde }

Katherine N. Crowley Fine Art & Design



MONTHLY NEWSLETTER VOLUME IV No. 11 NOVEMBER 2010



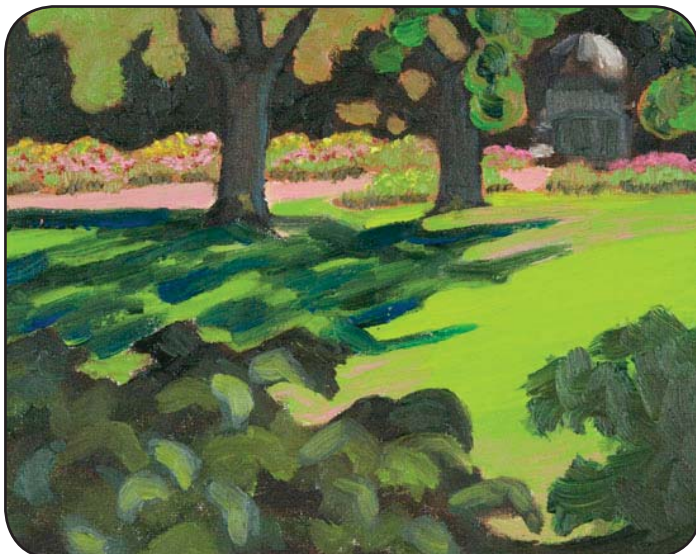
{on view}



Leaving Footprints: Works of Ohio Plein Air
November 13, 2010-January 15, 2011
Opening Artists Reception:
November 14, 2:00PM
Delaware Arts Castle
190 West Winter Street
Delaware, Ohio 43015
<http://www.artscastle.org>

PNC
arts alive
be part of art

Delaware Quarry by Richard Clem, Member of Ohio Plein Air



Above left: *Morning, The Park of Roses*, by Katherine N. Crowley, oil on canvas panel, 2009. Above Right: *Barn at Everal Farm*, by Katherine N. Crowley, oil on canvas panel, 2009. On view at the Arts Castle November 13, 2010-January 15, 2011.

{on view}

CAC Student Faculty Exhibit
October 1-November 14, 2010
Opening Artists Reception: Oct 1, 5:00-9:00PM
Columbus Cultural Arts Center
139 West Main Street
Columbus, Ohio 43215
<http://www.culturalartscenteronline.org>

{and beyond}

The Akron Art Museum (<http://www.akronartmuseum.org>)
"Who Shot Rock & Roll: A Photographic History, 1955-Present",
Through Jan. 23, 2011

"Culture Revolution: Contemporary Chinese Painting from the
Allen Memorial Art Museum", Through Feb. 24, 2011

The Museum of Fine Arts Boston (<http://www.mfa.org>)
"Kristin Baker: New Paintings", Through Mar. 27, 2011

"Millet & Rural France", Through May 30, 2011

The Institute of Contemporary Art Boston
(<http://www.icaboston.org>) "2010 James & Audrey Foster Prize",
Through Jan. 17, 2011

The Cincinnati Art Museum (<http://www.cincinnatiartmuseum.org>)
"Thomas Gainsborough and the Modern Woman",
Through Jan. 2, 2011

"Wedded Perfection: Two Centuries of Wedding Gowns",
Through Jan. 30, 2011

The Cleveland Museum of Art (<http://www.clevelandart.org>)
"Treasures of Heaven: Saints, Relics, and Devotion in Medieval
Europe", Through Jan. 17, 2011

The Art Institute of Chicago (<http://www.artic.edu>)
"Richard Hawkins: Third Mind", Jan. 16, 2011

Los Angeles County Museum of Art (<http://www.lacma.org>)
"William Eggleston: Democratic Camera-Photographs & Video
1961-2008", Through Jan. 16

"Eye for the Sensual: Selections from the Resnick Collection",
Through Jan. 2, 2011

Minneapolis Institute of Art (<http://www.artsmia.org>)
"Embarrassment of Riches: Picturing Global Wealth",
Through Jan. 2, 2011

New Orleans Museum of Art (<http://www.noma.org>)
"Residents & Visitors: 20th Century Photographs of Louisiana",
Through February 13, 2011

Metropolitan Museum of Art, NYC (<http://www.metmuseum.org>)
"Man, Myth & Sensual Pleasures", Through Jan. 17

Museum of Modern Art, New York (<http://www.moma.org>)
"Underground Gallery: London Transport Posters 1920s-1940s",
Through January 10, 2011

San Francisco Museum of Modern Art (<http://www.sfmoma.org>)
"The Anniversary Show", January 16, 2011

The Toledo Museum of Art (<http://www.toledomuseum.org>)
"Travels Through Ancient Lands", Through February 6, 2011

The National Gallery of Art, Washington, D.C. (<http://www.nga.gov>)
"American Modernism" Through Jan. 2, 2011

{all around the town}

{fine art}

Columbus College of Art and Design (<http://www.ccad.edu>)
"Shared Spaces: 2010 Faculty Biennial",
September 9-December 4, 2010, Canzani Center

The Columbus Cultural Arts Center
(<http://www.culturalartscenteronline.org>)
"2010 Student & Faculty Exhibit", October 1-November 13, 2010

The Columbus Museum of Art (<http://www.columbusmuseum.org>)
"Fur, Fins & Feathers", through June 5, 2011

"The Bible Illuminated", October 8, 2010-January 16, 2011

Dublin Arts Council (<http://www.dublinarts.org>)
"Masayuki Miyajima: Refined Function", Nov. 9-Dec. 17

McConnell Arts Center (<http://www.mcconnellarts.org>)
"Ellen Eisenman: Cultural Reflections", Through Jan. 3
"Water & Brush: Central Ohio Watercolor Society", Through Dec. 5

The Riffe Gallery (<http://www.oac.state.oh.us/riffe/>)
"Against the Grain: Modernism in the Midwest", Through Jan. 9

The Wexner Center (<http://www.wexarts.org>)
"Six Solos: Erwin Redl, Gustavo Godoy, Joel Morrison,
Katy Moran, Megan Geckler, Tobias Putrih/MOS", Thru Feb. 13

{performing arts}

BalletMet (<http://www.balletmet.org>)
"Dangerous Liaisons", November 5-13, Capitol Theater

Columbus Symphony (<http://www.columbussymphony.com>)
All performances at the Ohio Theater
"Wetherbee Plays Mendelssohn" Nov. 6 & 7
"Neil Sedaka" Nov. 13
"Handel's Messiah" Nov. 20 & 21

CAPA (<http://www.capa.com>)
"The Temptations" Nov. 14 Ohio Theater
"Benise: The Spanish Guitar" Nov. 17 Palace Theater
"Aida" Nov. 18 Southern Theater
"Cats" Nov. 19-21 Palace Theater
"An Evening with Oleta Adams" Nov. 20 KingArts Complex

Little Theater Off Broadway (<http://www.lto.org>)
"Dial M for Murder", Grove City, Through Nov. 20

Saint Joseph Cathedral Music (<http://www.cathedralmusic.org>)
"State Symphony Capella of Russia", Nov. 7, 3:00pm

{festivals}

Columbus International Film & Video Festival
(<http://www.chrisawards.org>)
Nov. 16-21, CCAD & Gateway Film Center