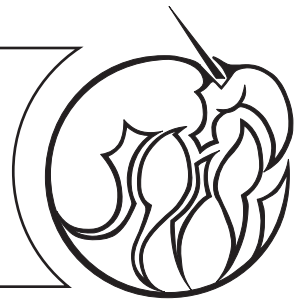


{ the avant-garde }

Katherine N. Crowley Fine Art & Design



MONTHLY NEWSLETTER VOLUME IV No. 5 MAY 2010



{on view}

*The Worthington Area Art League at Motorist
Mutual Insurance*

May 29-June 23, 2010

Motorist Mutual Insurance Group

471 East Broad Street

Columbus, Ohio 43215

{upcoming exhibits}

The Ohio State Fair Fine Arts Exhibition

July 28-August 8, 2010

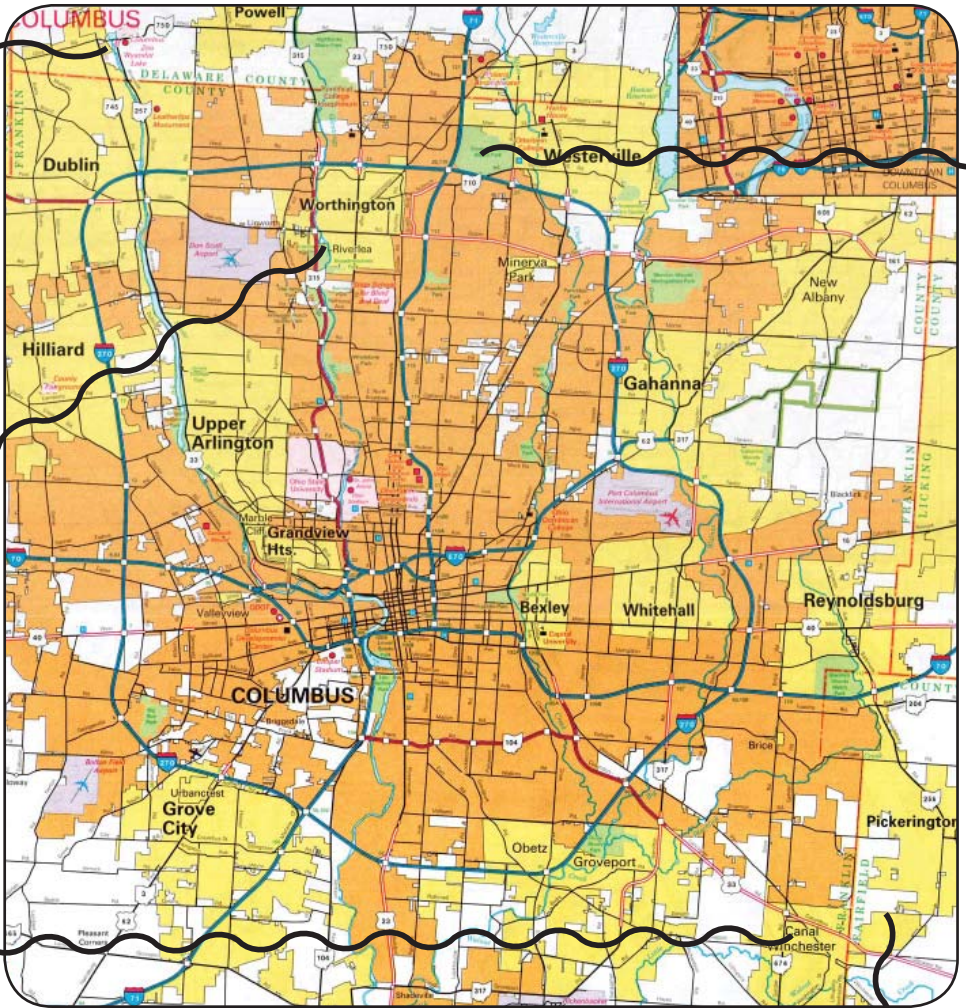
Jurors: James K. Alicea, Annegreth Nill &

Melissa Vogley Woods

Ohio Expo Center

Columbus, Ohio

Above: *The Meadow at Highbanks Park*, by Katherine N. Crowley, 2010.



{discover columbus metro parks}

Glacier Ridge

Named for the end moraine that was left behind when the Wisconsin Glacier retreated some 12,000 to 17,000 years ago, much of this Metro Park was used as farm land. -*Two Trees*, Glacier Ridge. 2010.

Highbanks

Highbanks is appropriately named for its massive 100-foot high shale bluffs that tower over the Olentangy State Scenic River. -*Meadow*, Highbanks. 2010.

Slate Run Living Historical Farm

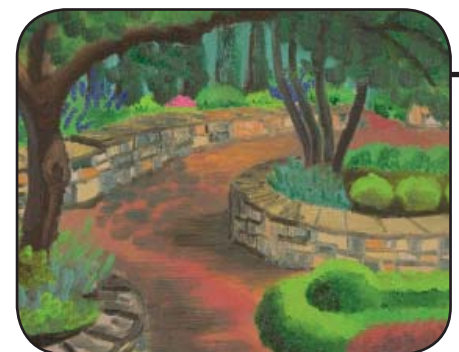
Time has been turned back to the 1880s at Slate Run Living Historical Farm. Visitors can experience first-hand what life was like on an Ohio farm more than 100 years ago. -*Barn at Slate Run Farm*, Slate Run Historical Farm. 2008

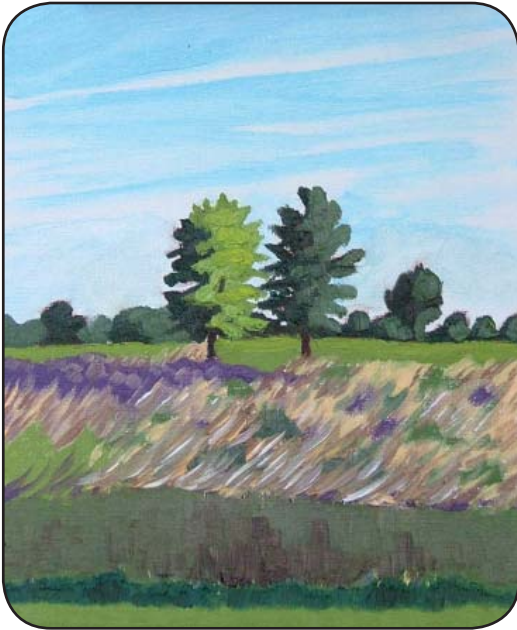
Pickerington Ponds

Designated as one of Ohio's Important Birding Areas by Audubon Ohio, Pickerington Ponds is a premier spot for observing more than 260 species of birds. -*Pickerington Ponds*. 2009.

Inniswood

Nestled within a scenic nature preserve, Inniswood Metro Gardens is a continual source of inspiration for Central Ohioans of all ages. -*Formal Gardens*, Inniswood. 2009.





{all around the town}

{fine art}

AGORA 7 (<http://www.agoracolumbus.com>)
May 21-22, Junctionview Studios

The Show: The 131st Annual Student Exhibition
(<http://www.ccad.edu>)
May 17-August 13, 2010

The Columbus Cultural Arts Center
(<http://www.culturalartscenteronline.org>)
The Paintings of Walter Wada, May 10-June 19, 2010

The Columbus Museum of Art (<http://www.columbusmuseum.org>)
"Chihuly Illuminated", through September 2010

The Riffe Gallery (<http://www.oac.state.oh.us/riffe/>)
"The I of the Text", May 6-July 11, 2010

The Short North (<http://www.shorthnorth.org>)
-Kathryn Gallery: "Flowers in Bloom"
-Lindsay Gallery: "Karl Mullen: Unframed + Unplugged"
-pm Gallery: "After the Flood", jewelry of Shea Yetta
-Sharon Weiss Gallery: "Lost, Found & Forgotten", G.W. Leach
-Studios on High: "Green Awakenings", All Member Show

The Wexner Center (<http://www.wexarts.org>)
"Mark Bradford", May 8-August 15
"Zoe Strauss", May 8-August 15

{performing arts}

CAPA (<http://www.capa.com>)
CAPA Summer Movie Series Announced: June 4-July 25
"Poncho Sanchez" May 2 Lincoln Theater
"Pilobolus" May 6 Palace Theater
"Diva Nation" May 23 Southern Theater

Catco (<http://www.catco.org>)
"The Mystery of Irma Vep: A Penny Dreadful", by Charles Ludlam
June 2-27, Riffe Center Studio Two Theater

Little Theater Off Broadway (<http://www.ltob.org>)
"Over the Tavern", April 30-May 22

Saint Joseph Cathedral Gala, Concert Series & Undercroft Gallery (<http://www.cathedralmusic.org>)
"Donor Concert", by invitation, May 16, 7:30PM, St. Joseph Cathedral

{festivals}

Delaware Arts Festival (<http://www.delawareartsfestival.org>)
May 15-16, Downtown Delaware

Waterfire Columbus (<http://www.waterfirecolumbus.com/>)
The Wonk Band, May 21, Genoa Park

Dragonboat Racing (<http://www.asian-festival.org>)
May 22, Genoa Park

Asian Festival (<http://www.asian-festival.org>)
May 29-30, Franklin Park

{and beyond}

The Museum of Fine Arts Boston (<http://www.mfa.org>)
SMFA Traveling Scholars
Through May 31, 2010

Minneapolis Institute of Art (<http://www.artsmia.org>)
"Southern Exposure: Photographs of the American South"
Through May 30, 2010

New Orleans Museum of Art (<http://www.noma.org>)
"Beyond the Blues: Reflections of African America",
April 10-July 11, 2010

Metropolitan Museum of Art, NYC (<http://www.metmuseum.org>)
"Picasso in the Metropolitan Museum of Art", Through August 1

Museum of Modern Art, New York (<http://www.moma.org>)
"Marina Abramovic: The Artist is Present", Through May 31

San Francisco Museum of Modern Art (<http://www.sfmoma.org>)
"Paul Klee", Through August 1

The National Gallery of Art, Washington, D.C. (<http://www.nga.gov>)
"The Sacred Made Real: Spanish Painting & Sculpture, 1600-1700" Through May 31

Above: *Two Trees at Glacier Ridge*, and *From the Boardwalk, Galena Ohio*. by Katherine N. Crowley, 2010.